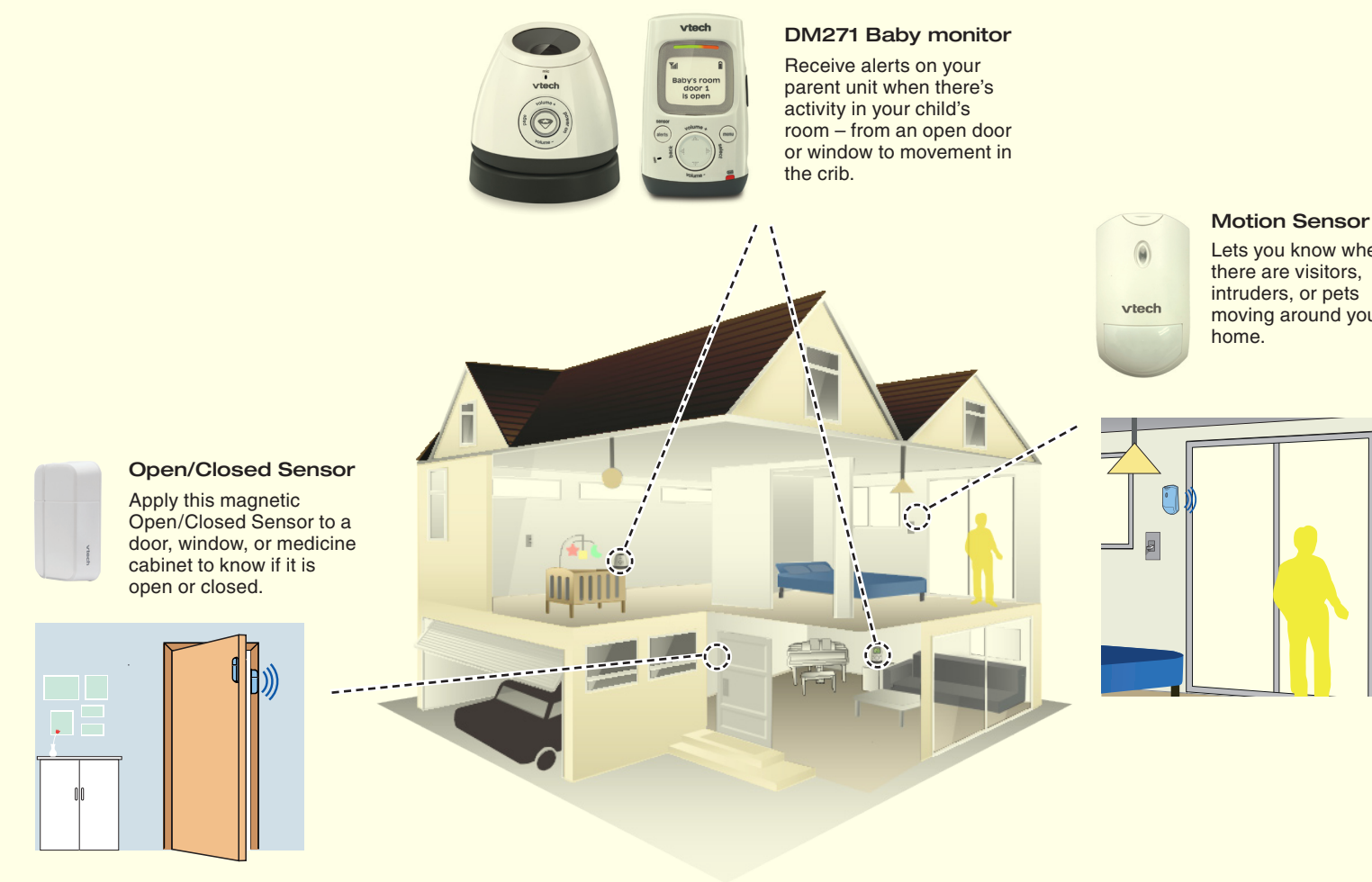


## How the system works

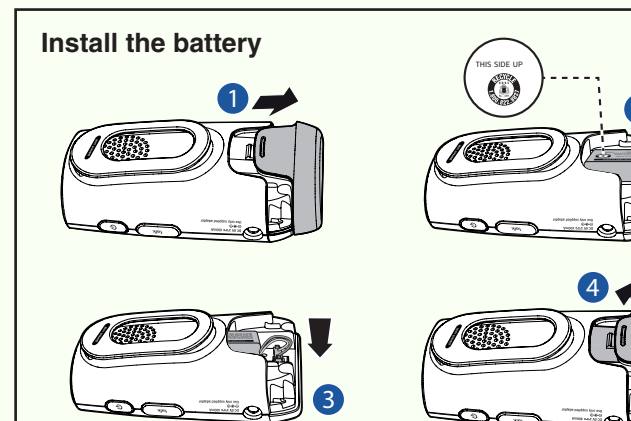


## Baby Monitor installation

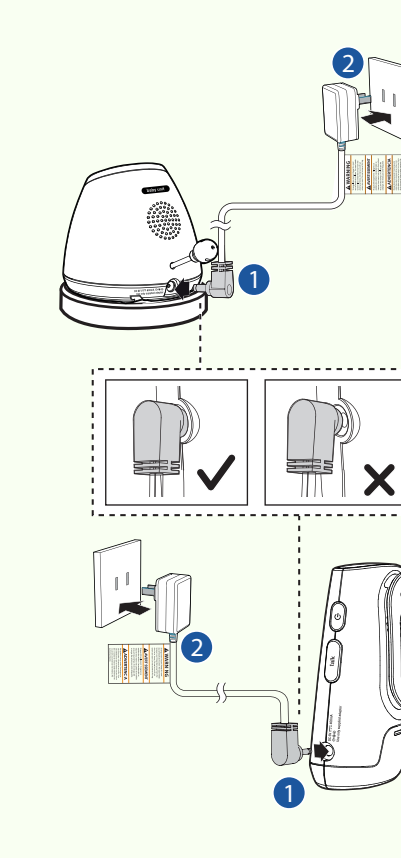
### 1 Parts checklist



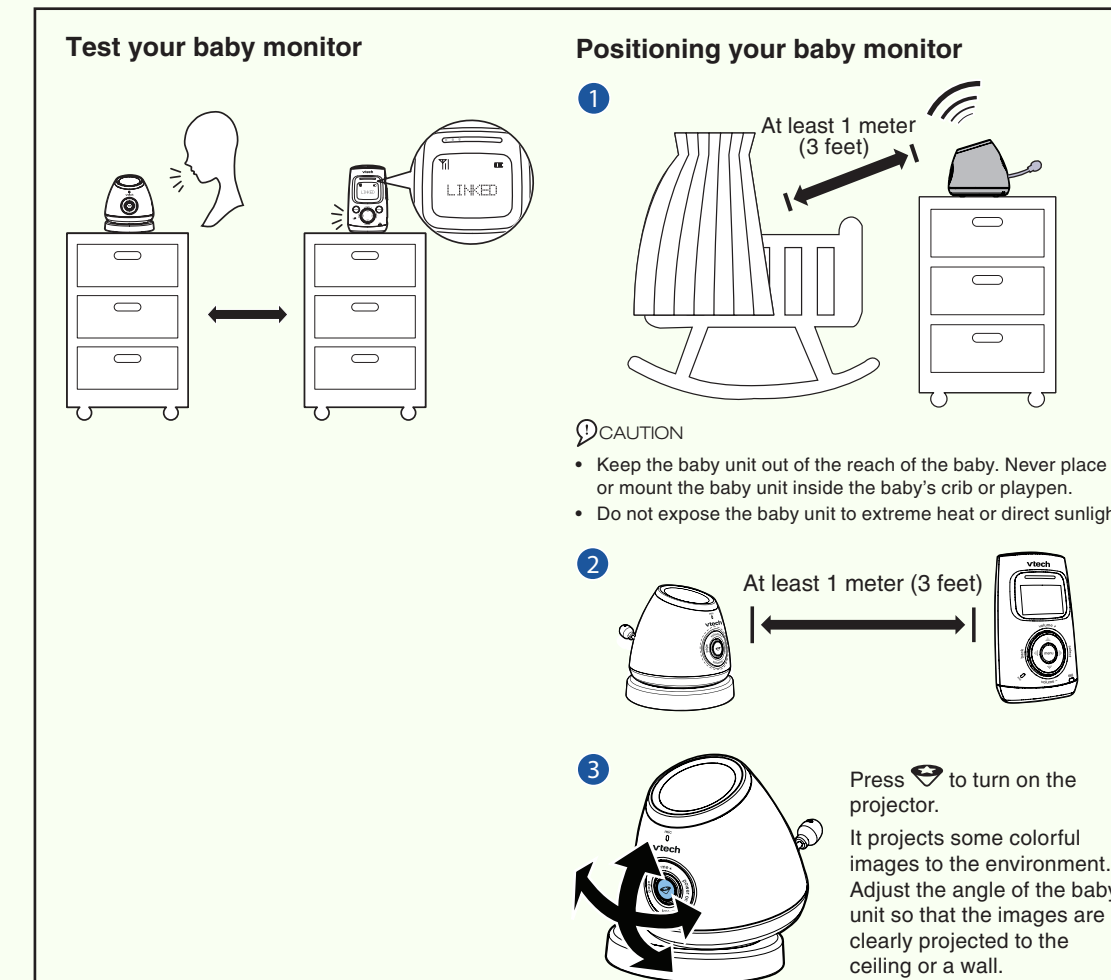
### 2 Connect



### Connect the baby monitor



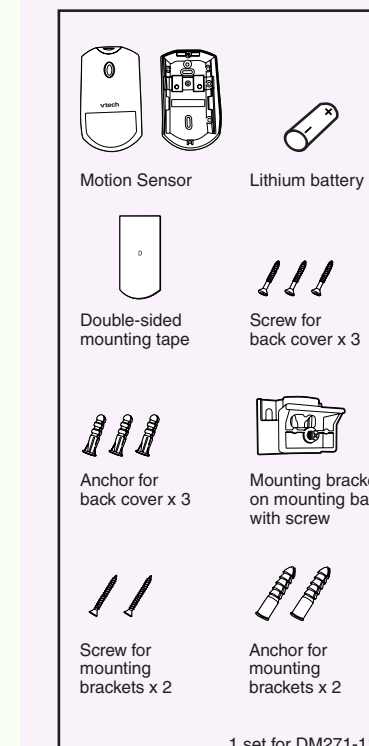
### 3 Check and Locate



### If your package includes a Motion Sensor, please read the following section.

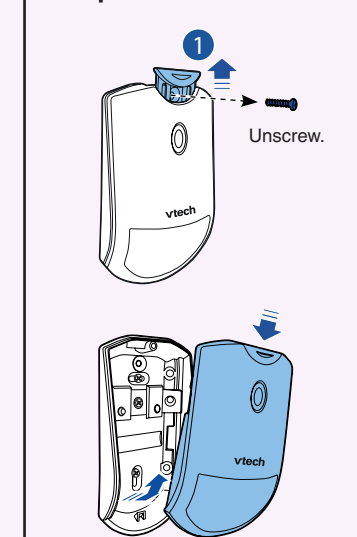
#### Motion Sensor installation

##### 1 Parts checklist

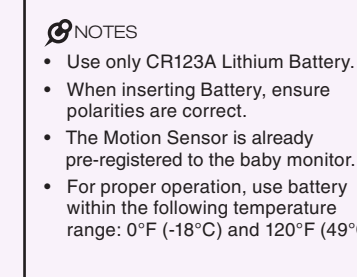


### 2 Power

#### Open the battery compartment case



#### Install Motion Sensor Battery



##### NOTES

- Use only CR123A Lithium Battery.
- When inserting Battery, ensure polarities are correct.
- The Motion Sensor is already pre-registered to the baby monitor.
- For proper operation, use battery within the following temperature range: 0°F (-18°C) and 120°F (49°C).

### 3 Motion Detection

The Motion Sensor detects motion with one-minute cool off time. Once motion is detected, the sensor will only start to detect motion again after one minute. The Motion Sensor is more sensitive in detecting motions crossing the space in front of the sensor than that moving towards the sensor.

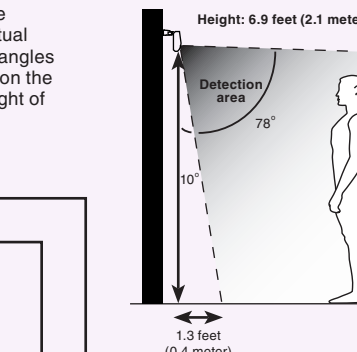
##### NOTE

- The numerical values in the illustrations are for conceptual reference only. The actual angles and distances may vary upon the change in the mounted height of the sensor.

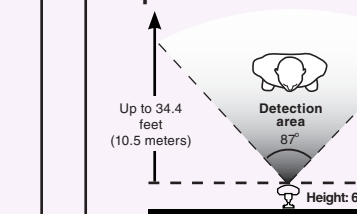
The Motion Sensor can detect motion occurring at distances up to **40 feet (12 meters)** when it is mounted at a height of **7.9 feet (2.4 meters)**.

It is recommended to mount the sensor at the height between **6.2 feet (1.9 meters)** and **7.5 feet (2.3 meters)** for optimal detection coverage.

##### Side view



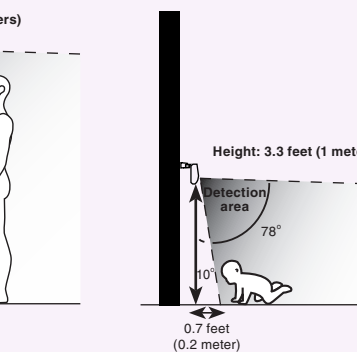
##### Top view



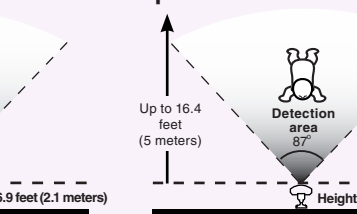
**For motion detection of babies or pets:**

If you use the Motion Sensor only to detect the motion of babies or pets, you can mount the sensor at a lower position to shorten the minimum distance before reaching the detection area. It is recommended to mount it at the height **3.3 feet (1 meter)** for optimal detection of babies or pets.

##### Side view

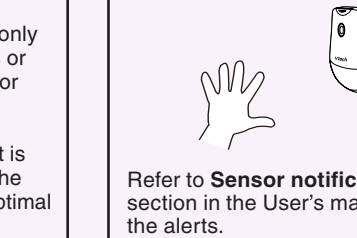


##### Top view



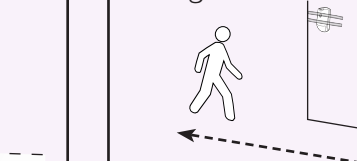
### 4 Check and locate

Check the motion sensor before use



Refer to **Sensor notifications** section in the User's manual for the alerts.

Test the sensor signal strength



Use your parent unit to enter the **Sensor settings** menu, and then select the **Check signal** menu. Follow the steps to test the sensor's signal strength, and then exit the sensor setup mode. Make sure there is a good signal received when there is motion.

##### NOTES

- If **No signal** or **Weak signal** message is displayed in sensor setup mode, or if you do not receive an alert when you open the door, move the base closer to the mounting location or move the sensor closer to the base.
- Use adhesive tape to hold the sensor temporarily in place.



### 5 Mount

#### NOTES

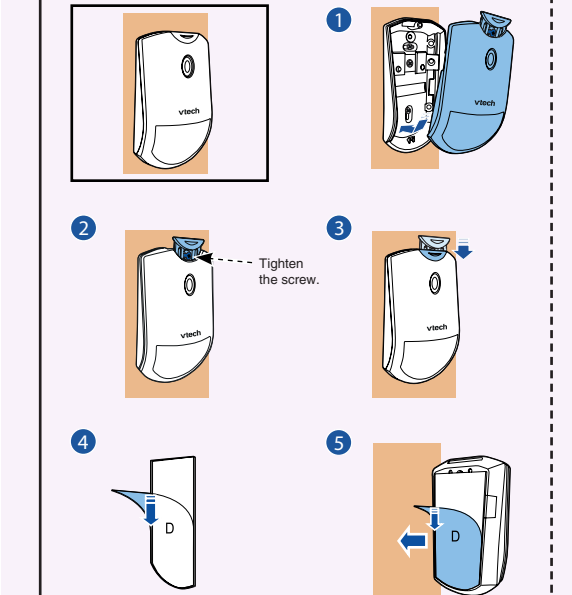
- This sensor must be mounted vertically on wall. Do not mount the Motion Sensor in a horizontal orientation, or flat on the ceiling.
- If you drill the holes into an object other than a stud, insert the screw anchors into the holes and tap gently on the ends with a hammer until the screw anchors are flush with the wall or ceiling.

#### TIP

- You can choose to mount the sensor with the mounting tape first. Remove the mounting tape and use screws later if you decide to mount it at that location for long term.

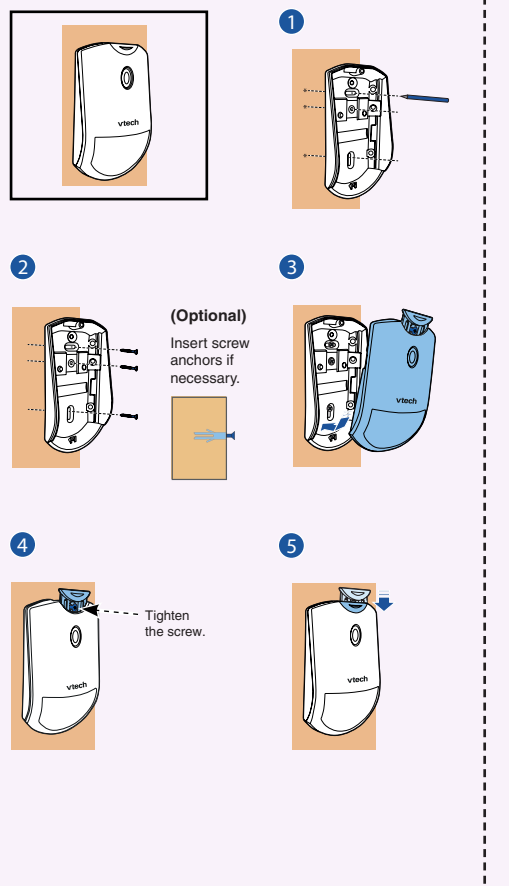
#### Mount with screws

##### Mount on the wall - with fixed angle

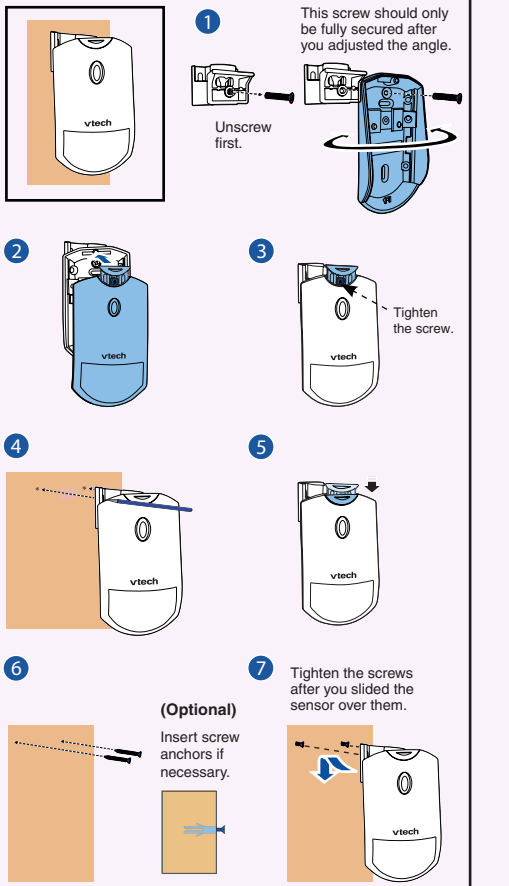


#### Mount with screws

##### Mount on the wall - with fixed angle



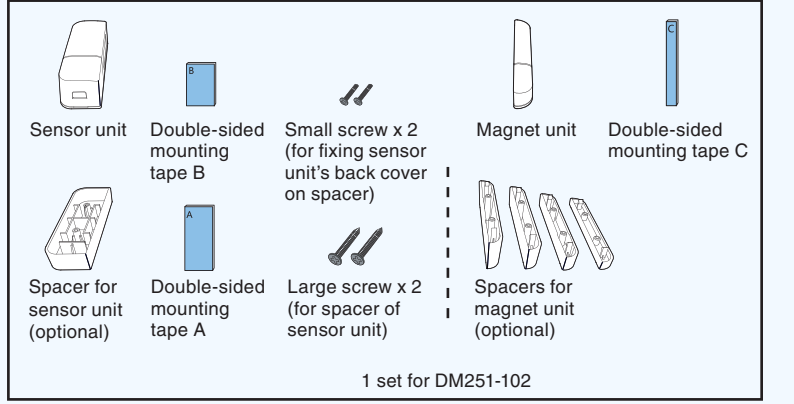
##### Mount on the wall - with rotate detection angle



### If your package includes an Open/Closed sensor, please read the following section.

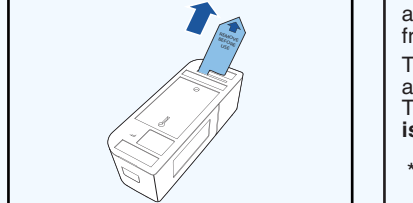
#### Open/Closed sensor installation

#### 1 Parts checklist



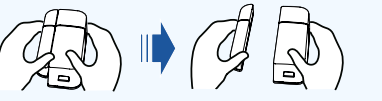
#### 2 Power on

- #### NOTES
- The batteries are pre-installed in your Open/Closed sensor.
  - The Open/Closed sensor is already pre-registered to the baby monitor.
  - The batteries operate properly under the temperature between 0°F (-18°C) and 130°F (55°C).



#### 3 Check and locate

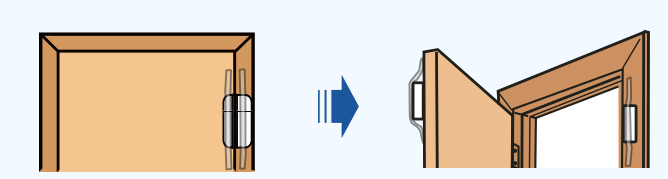
Check your Open/Closed sensor before use



Make sure both baby unit and parent unit are on. Then, separate the sensor unit from the magnet unit. The parent unit will emit an alert tone, and announce "Open/Closed X\* is open". The screen will display **Open/Closed X is open**.

\* X refers to the system-assigned number of the sensor.

#### Test the sensor signal strength



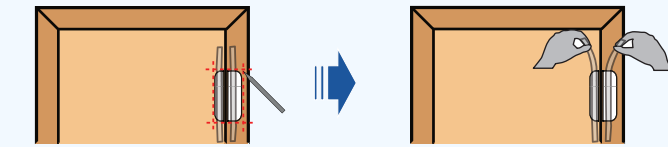
- Use adhesive tape to hold the sensor temporarily in place.
- Mount the sensor to a higher position to avoid obstacles or blockages. Depending on surroundings and obstructing factors, like walls or cabinets, the sensor may not transmit to the baby unit properly.

Use your parent unit to enter the **Sensor settings** menu, and then select the **Check signal** menu. Follow the steps to test the sensor's signal strength, and then exit the sensor setup mode. Make sure there is a good signal received when you open the door as usual.

#### NOTE

- If **No signal** or **Weak signal** message is displayed in sensor setup mode, or if you do not receive an alert when you open the door, move the baby unit closer to the mounting location or move the sensor closer to the baby unit.

After testing the sensor signal strength, mark the mounting location on the door, window, or medicine cabinet and its respective frame. Then, remove the adhesive tape and proceed to the mounting process.



#### NOTE

- The door images in this installation guide are for conceptual reference only.

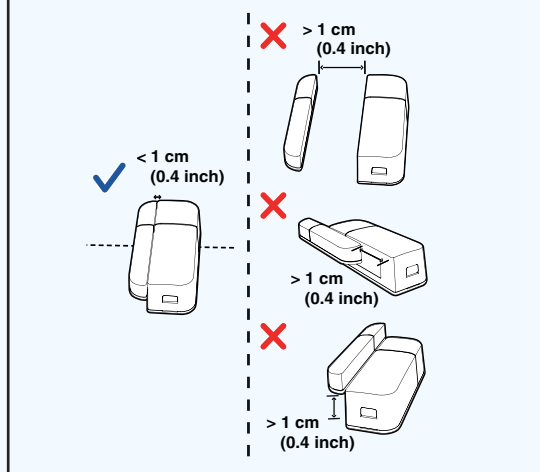
### 4 Mount

We recommend you mount the magnet unit on a door, window, or medicine cabinet, and mount the sensor unit on its respective frame.

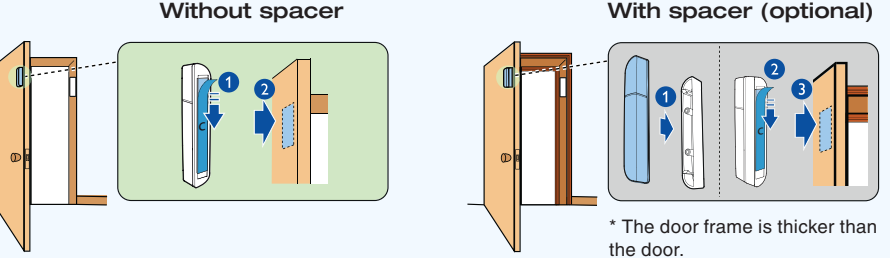
You can use the spacers provided if there is a difference in level between the door and the frame. The spacer will help to align your sensor to the correct height. You can also use a spacer if the frame is too narrow or has some decorative molding.

#### NOTES

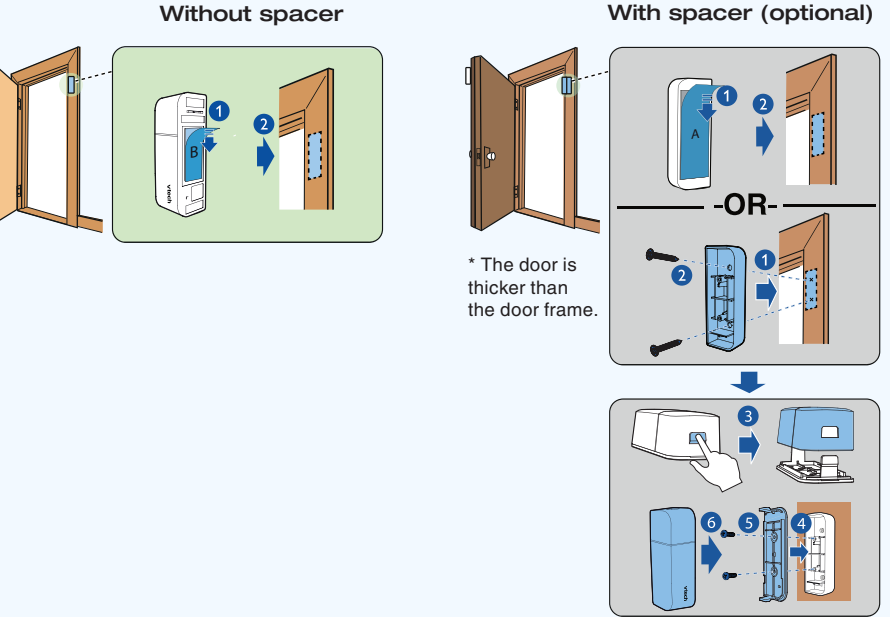
- You can mount the sensor unit with mounting tape first, and then use screws later if you decide to mount it at that location for long term.
- Make sure the mounting surface is clean. A textured surface or any imperfections to a smooth surface can keep the mounting tape from making a strong bond.
- Align the magnet unit with sensor unit when mounting.
- The distance between the sensor unit and magnet unit must be **less than 1 cm (0.4 inch)**.



#### Mount the magnet unit



#### Mount the sensor unit



Go to [www.vtechphones.com](http://www.vtechphones.com) to register your product for enhanced warranty support and the latest VTech product news.

DM271  
 DM271-102  
 DM271-110  
 Wireless Monitoring System  
 with Safe & Sound®  
 Digital Audio Monitor



**vtech**  
 Installation guide